



Bartlett HOMES

# HOME PACKAGE

AVAILABLE ON YOUR OWN LAND

Or we can find the land for you

# \$367,625

## WREN V1

Heron Facade

248.22m<sup>2</sup>

4

BEDROOM

2

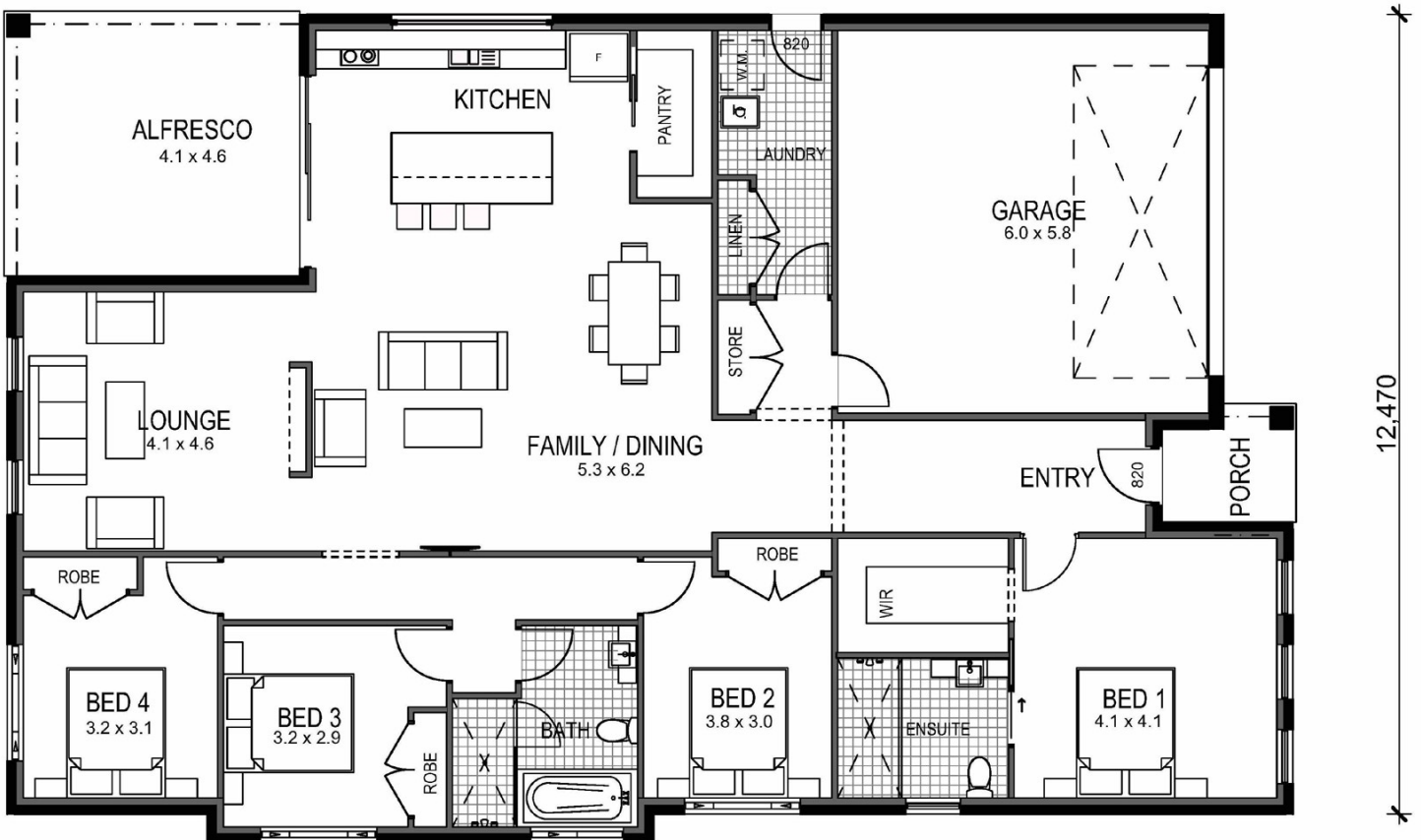
BATHROOM

2

LIVING

2

GARAGE



20,031

12,470

# HOME PACKAGE

## AVAILABLE ON YOUR OWN LAND

### PACKAGE INCLUDES:

- Site Costs & BASIX based on 1 meter fall over building site
- Council application fees both DA & CC
- Truecore Steel Frame & Trusses
- Termimesh Pest Control
- Colorbond Roof with Anticon Blanket
- Flyscreens to all Windows
- Flydoors to All Sliding Doors
- Actron Ducted Air Conditioning
- 900mm Westinghouse Appliances-  
*Cooktop, Oven, 750 Rangehood, Microwave*
- Stainless Steel Dishlex Dishwasher
- 20mm Caesarstone Benchtops to Kitchen with Waterfall Ends to Island
- Floor Coverings (Carpet & Tiles)
- Concrete Driveway
- Hume 1000mm Stained Entrance Door
- Alfresco with Concrete Slab
- Overhead Cupboards with Sheen Finish inc bulkhead over
- Automatic Sectional Panelift Colorbond Garage Door with 2 Remotes
- Personal Colour Consultation
- PGH Certified Brick Cleaning
- **Plus many more quality inclusions!**



### Contact:

**Phone:** (02) 4932 4009

**Email:** [sales@bartletthomes.com.au](mailto:sales@bartletthomes.com.au)

**Web:** [www.bartletthomes.com.au](http://www.bartletthomes.com.au)



This price is based on a standard block of land with standard site costs, 6 meter set back from boundary line and BASIX only. Price based on standard inclusions and current promotion. Images may include upgrade items and may depict fixtures, features and finishes not supplied by Bartlett Homes such as landscaping and fencing. Floorplan demonstrates Heron facade and may vary depending on chosen facade. Package price may alter depending on your chosen estate and statutory requirements. See your Bartlett sales consultant for full details. Package correct at time of printing and subject to change without notice of inclusions. Package printed date: 01/08/2020