

HOUSE AND LAND PACKAGE

IN ROSEHILL, MILLFIELD

(Land Size: 4166m²)

\$653,008

SHEARWATER HOMESTEAD 33

Hayman Facade

303.93m²



4

BEDROOMS

2

BATHROOMS

3

LIVING

2

GARAGE

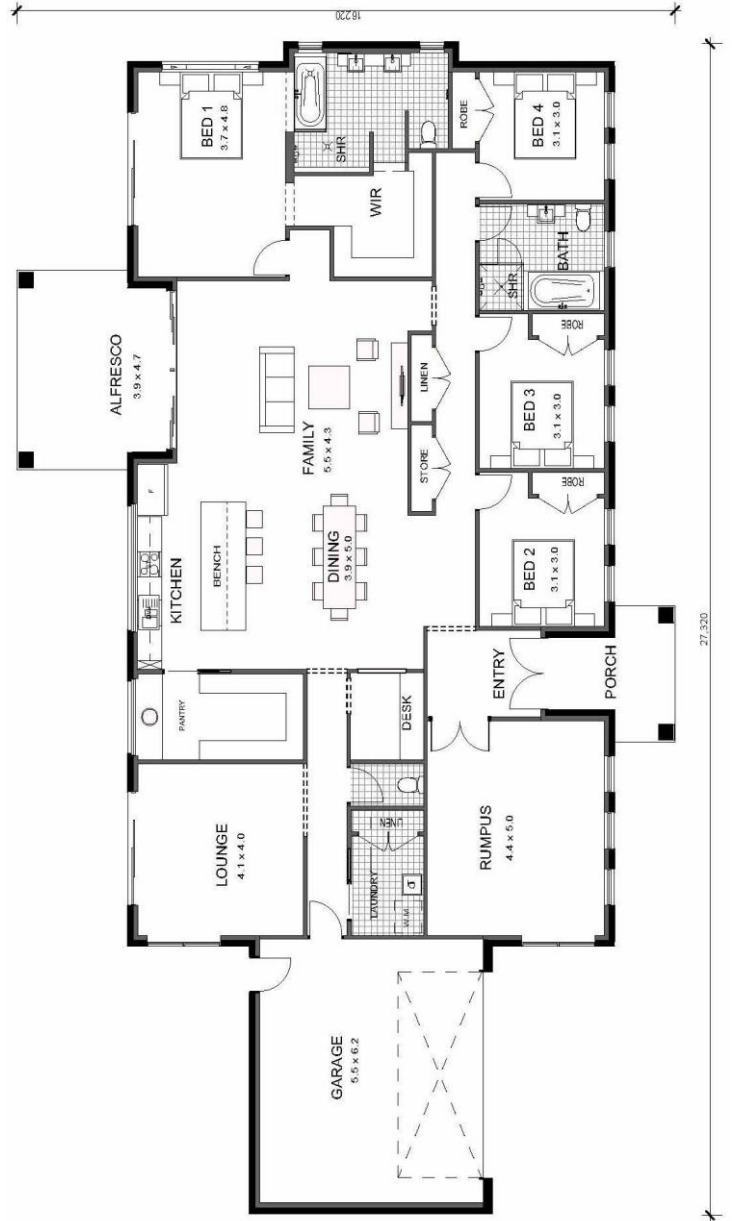
Price based on land cost of \$280,000 at time of printing.

HOUSE AND LAND PACKAGE

LOT 307, PROPOSED ROAD, MILLFIELD

PACKAGE INCLUDES:

- Provisional Site Costs, BASIX and Council Costs
- Truecore Steel Frame & Trusses
- Termimesh Pest Control
- Colorbond Roof with Anticon Blanket
- Flyscreens to all Windows
- Flydoors to All Sliding Doors
- Actron Ducted Air Conditioning
- 900mm Westinghouse Appliances- *Cooktop, Oven, Rangehood, Microwave*
- Stainless Steel Dishlex Dishwasher
- 20mm Caesarstone Benchtops to Kitchen with Waterfall Ends to Island
- Floor Coverings (Carpet & Tiles)
- Hume 1200mm Stained Entrance Door
- Alfresco with Concrete Slab
- Overhead Cupboards with Sheen Finish
- Automatic Sectional Panelift Colorbond Garage Door with 2 Remotes
- Personal Colour Consultation
- PGH Certified Brick Cleaning
- **Plus many more quality inclusions!**



Contact:

Jackie Barton - Sales Consultant (Harvest Boulevard, Chisholm)

Phone: (02) 4046 9832 Mobile: 0419 417 755

Email: jackie@bartletthomes.com.au

Web: www.bartletthomes.com.au

